



Margaret A. Cargill
PHILANTHROPIES



STRENGTHENING PARTNERSHIPS FOR COMMUNITY RESILIENCE

Building disaster-ready communities through inclusive,
integrated, and multidisciplinary approaches

The Strengthening Partnerships for Community Resilience
in Indonesia and Timor-Leste (SPRINT) project is funded
by the Margaret A. Cargill Foundation.

April 2023 - March 2025

INTRODUCTION

Current disaster risk management (DRM) approaches often fall short in addressing the needs of vulnerable communities at the local level. Top-down strategies overlook local vulnerabilities and fail to tap into the potential of local resources and capacities. It is crucial to shift the focus and empower at-risk communities to lead in planning and implementing DRM interventions, in collaboration with local, provincial, and national stakeholders.

The Asian Disaster Preparedness Center (ADPC) is implementing the project “Strengthening Partnerships for Community Resilience in Indonesia and Timor Leste (SPRINT)” to build disaster-ready communities through inclusive, integrated, and multidisciplinary approaches.



PROJECT COVERAGE

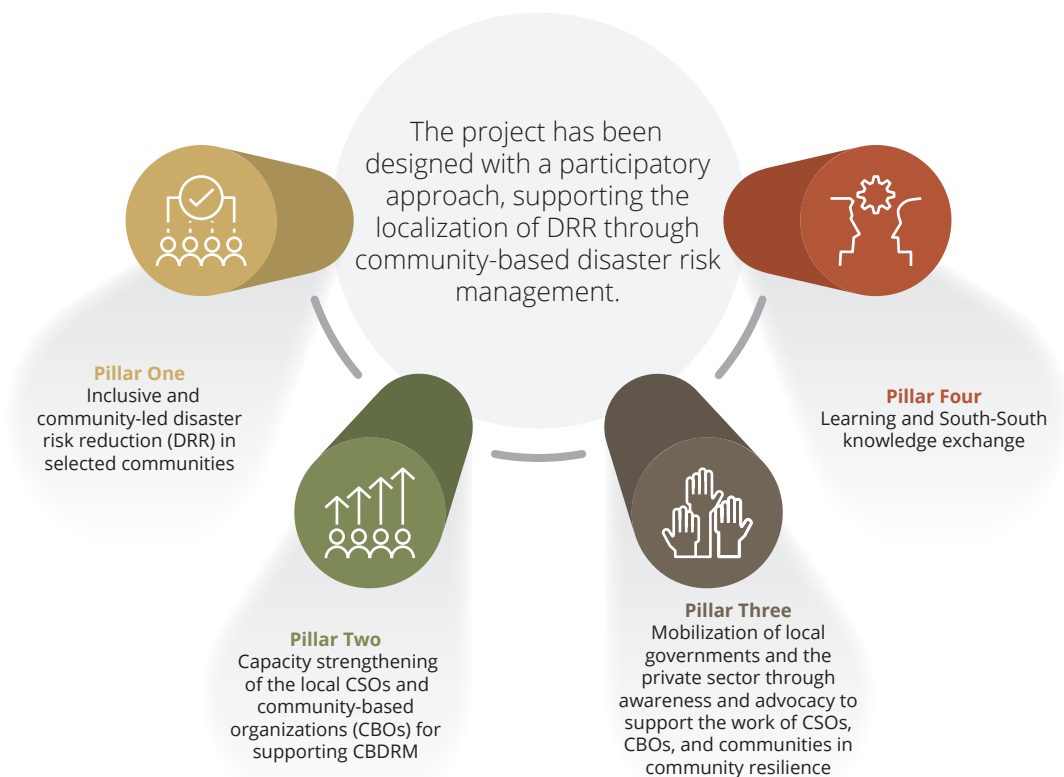
Lampung Province, Indonesia and Ainaro Municipality, Timor-Leste

Indonesia and Timor-Leste are high-risk countries in the region due to exposure to floods, cyclones, earthquakes, and tsunamis as well as low coping capacities, specifically in remote and low-attention districts and islands. The project areas have a high-risk profile associated with recurring impacts of low-attention disasters as well as limited support and reach, particularly from external agencies.

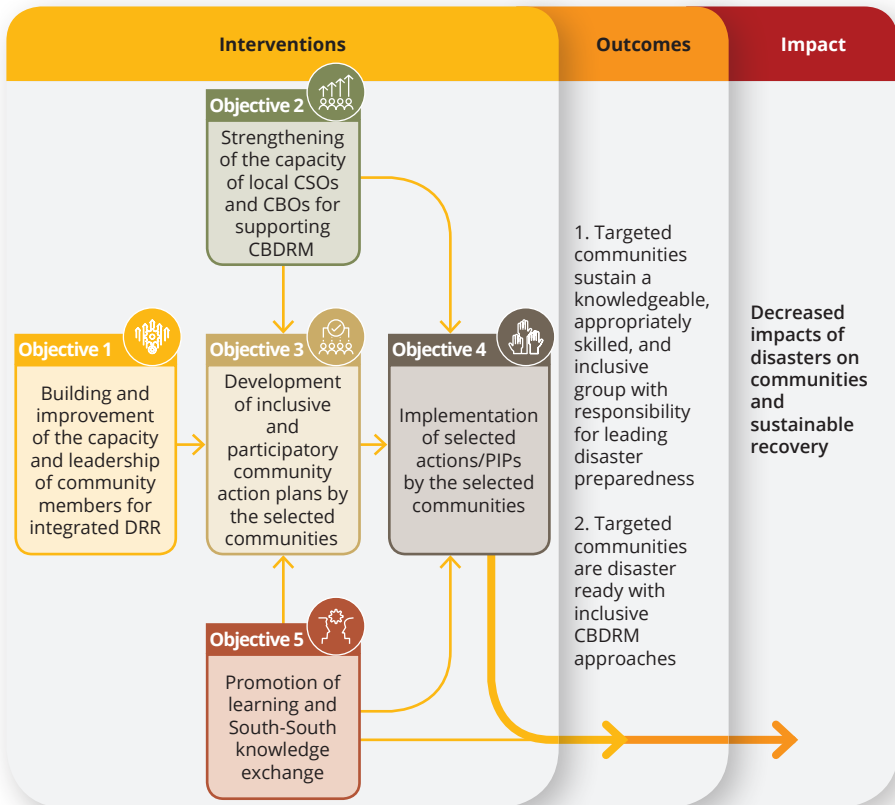
LOCALLY-LED PREPAREDNESS ACTIONS THROUGH INCLUSIVE APPROACHES

The project will enhance the capacity of the targeted communities in selected districts/villages of Lampung province in Indonesia and Ainaro municipality in Timor-Leste to prepare for, respond to, and recover from disaster impacts through inclusive, integrated, and multidisciplinary community-based disaster risk management (CBDRM) approaches.

This will be achieved through the following four pillars:



EXPECTED OUTCOMES



By placing at-risk communities at the center of decision-making processes and enhancing the capacity of local organizations, we aim to create disaster-ready communities that can withstand future challenges.

Asian Disaster Preparedness Center (ADPC)

Head Office:
 SM Tower, 24th Floor, 979/69 Paholyothin Road,
 Samsen Nai Phayathai, Bangkok 10400 Thailand
 Tel: +66 2 298 0681-92 | Fax: +66 2 298 0012

 www.adpc.net

 @ADPCnet

 Asian Disaster Preparedness Center (ADPC)

 Asian Disaster Preparedness Center - ADPC

Contact Information:

Mr. Sisira Madurapperuma
 Director
 Preparedness for Response and Recovery
 Asian Disaster Preparedness Center
 Email: sisira@adpc.net, sprint@adpc.net