

SRI LANKA



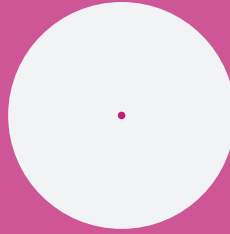
Geographic Location

7.8731° N, 80.7718° E

Area

scale = 1 Million km²

65,525 km²



Population

 = 25 Million

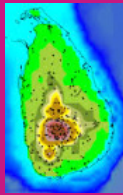
20.7 Million
with 18.4%
urban ●



% Population in (LECZ)

11.79

Topography



A highland massif ringed by upland ridges and valleys and lowlands with a coastal fringe

Climate

The climate is "tropical monsoonal". Two monsoon periods are (May-Sep.) and (Dec-Feb). The average temperature of the lowlands ranges between 25-30 degrees Celsius. It is modified by altitude.



Asian Disaster Preparedness Center
SM Tower, 24th Floor, 979/69 Paholyothin Road,
Samsen Nai Phayathai, Bangkok 10400 Thailand
Tel:+66 2 298 0681-92 | Fax:+66 2 298 0012
Email:app@adpc.net